

A REQUEST FOR PROPOSAL FOR PERSONAL SERVICES CONTRACT

Department of Highways
Professional Services Procurement Bulletin 2013-09
Wayne/KY 92/8-0394.00

This document constitutes a Request for Proposals for Personal Service Contract from qualified individuals and organizations to furnish those services as described herein for the Commonwealth of Kentucky, Department of Highways.

I. PROJECT DESCRIPTION

County – Wayne

Route – KY 92

Item No. – 8-0394.00

Project Description – Raise Grade to prevent flooding from 0.5 miles west of Valley View Drive to 0.7 miles west of KY 1258.

II. PROJECT INFORMATION

Project Manager – Joe Gossage, P.E.

User Division – Highway Design

Approximate Fee – \$500,000

Project Funding – State Funds (SPP)

Project Length – 2.061 miles

III. PURPOSE AND NEED

Purpose : To address the flooding issue that frequently occurs on this roadway due to lack of elevation difference between the roadway surface and the low lying surrounding terrain.

Need : KY. 92 is a Federal Aid route and vital link between Wayne & McCreary counties and communities between these two counties. Safety issues exist related to roadway width, clear zone and horizontal & vertical curvature deficiencies. Additionally, frequent flooding occurs on this route due to roadway surface elevations in relation to the surrounding terrain.

IV. DBE REQUIREMENT

None

V. SCOPE OF WORK

The purpose of the design contract is to provide for Phase I Preliminary Engineering only. This will include hydrologic analysis to determine water surface elevation for the design storm for the drainage area that this project is located within, and a hydraulic analysis to get a preliminary size for any hydraulic structures on the project. Phase II Final Roadway Design may be added by contract modification. Phase II units may be negotiated at the end of Phase I after an approved Preliminary Line and Grade.

VI. SPECIAL INSTRUCTIONS

The Department may retain any of the advertised services to be performed by in-house state forces.

Instructions for Response to Announcement can be found at:

<http://transportation.ky.gov/Professional-Services/Pages/Respond-to-an-Announcement.aspx>

VII. AVAILABLE STUDIES

[8-394 KY 92 DNA Study](#)

VIII. METHOD OF DESIGN

The selected consultant shall utilize the CADD Standards for Highway Plans Policy in the development of the highway plans.

IX. ENVIRONMENTAL

This is a State Funded Project, no NEPA document required. 401/404 permits may be required. All necessary environmental work will be provided by the Department.

X. GEOTECHNICAL SERVICES

The Department will provide all Geotechnical Services required for the project.

XI. TRAFFIC

The Department will provide all the necessary traffic projections and related information required for this project.

XII. STRUCTURE DESIGN

The selected consultant shall provide the necessary engineering services to submit an Advanced Situation Folder(s) to the KYTC for the appropriate applicable structure(s). The structure design will be performed by the Cabinet. Prequalification in the area of structure design is not required to be identified in the Consultant's Response to Announcement.

XIII. PHOTOGRAMMETRIC SERVICES

The Department will furnish the manuscripts that are suitable for Phase I and Phase II design.

XIV. PREQUALIFICATION REQUIREMENTS

To respond to this project, the project team must be prequalified in the following areas by the date of this advertisement.

ROADWAY DESIGN

- Rural Roadway Design >\$250,000
- Surveying

XV. PROCUREMENT SCHEDULE

RESPONSE DATE • April 10, 2013, 4:30 p.m. E.S.T. (Frankfort time)

FIRST SELECTION COMMITTEE • April 16, 2013

SECOND SELECTION COMMITTEE • May 1, 2013

PRE-DESIGN CONFERENCE • May 8, 2013

TENTATIVE DEADLINE FOR CONSULTANT FEE PROPOSAL • May 17, 2013

CONTRACT NEGOTIATIONS • May 31, 2013

NOTICE TO PROCEED • July 1, 2013

XVI. PROJECT SCHEDULE

PRELIMINARY DRAINAGE INSPECTION • February 2014

PRELIMINARY LINE AND GRADE • April 2014

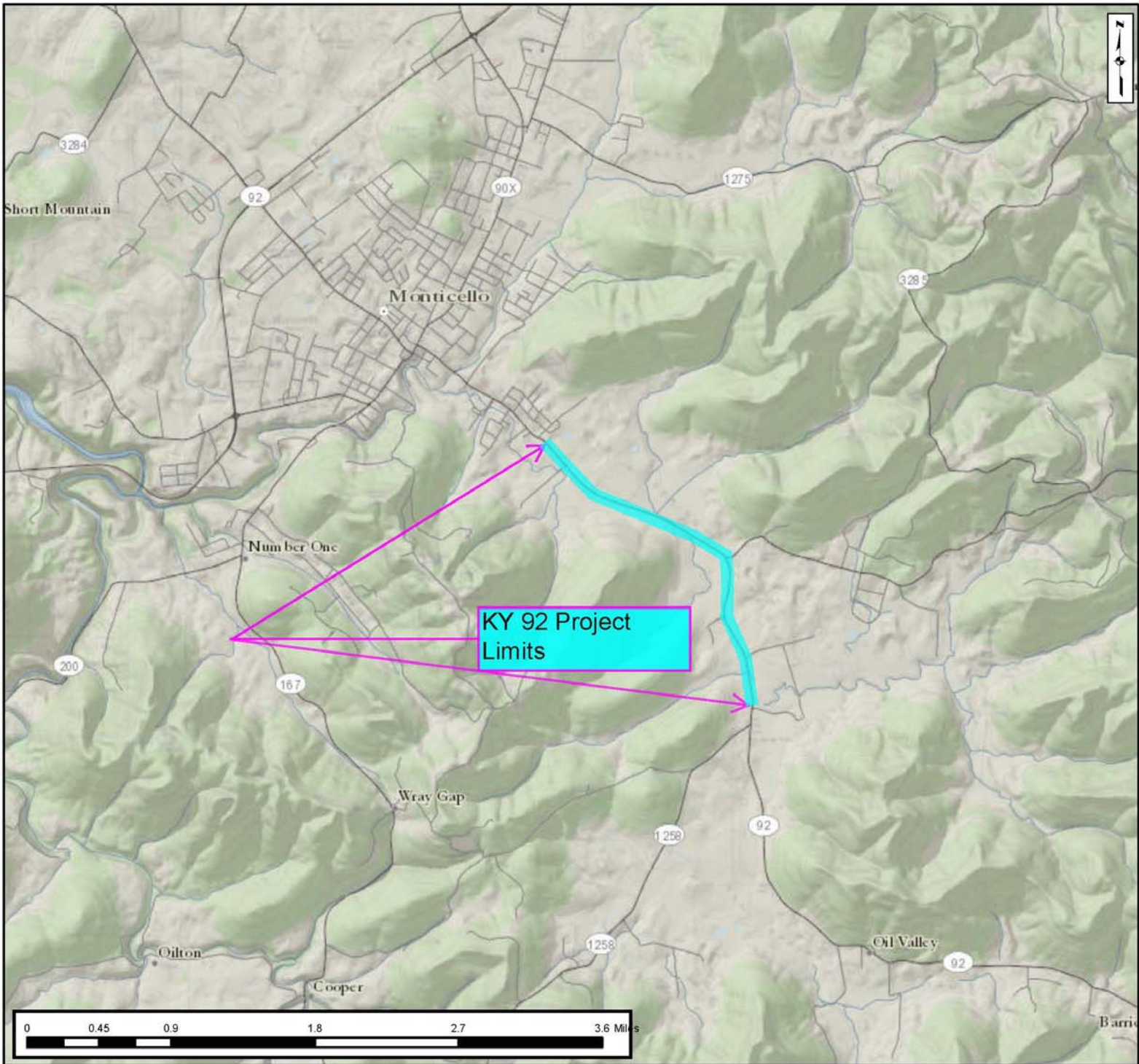
XVII. EVALUATION FACTORS

1. Relative experience of consultant personnel assigned to project team with highway projects for KYTC and/or federal, local or other state governmental agencies. (10 points)
2. Capacity to comply with project schedule. (10 points)
3. Past record of performance on project of similar type and complexity. (10 points)
4. Project approach and proposed procedures to accomplish the services for the project. (10 points)
5. DBE Participation Plan (4 points)
6. Consultant's offices where work is to be performed. (2 points)

For state-funded projects, if a Selection Committee vote results in a tie between two (2) firms, one (1) of which will perform more of the work tasks in Kentucky than the other, then the former firm shall be ranked one (1) place ahead of the latter.

XVIII. SELECTION COMMITTEE MEMBERS

1. Joe Gossage, P.E., User Division
2. Jill Asher, P.E., User Division
3. Tim Pyles, P.E., Secretary's Pool
4. Diana Radcliffe, P.E., Secretary's Pool
5. James Rogers, Governor's Pool



- | | | | | | | | | | | |
|-------------------------|---------------------------------|---------------------------------|---------------------------------|--------------------------------------|---|------------------------------------|----------------|-------------------|--------------------|-------------------|
| Route Log | 1/10th Mile Calculated Interval | 1/10th Mile Calculated Interval | Truck Routes
COMMACC | Bridges | Zip Code Area | USGS Quadrangle | KYTC Districts | US House District | KY Senate District | KY House District |
| | | | Federal Truck Route | | | | | | | |
| | | | State Truck Route | | | | | | | |
| National Highway System | NHS Connector to Airport | NHS Connector to Port Facility | NHS Connector to Amtrak Station | NHS Connector to Rail/Truck Terminal | NHS Connector to Intercity Bus Terminal | NHS Connector to Pipeline Terminal | | | | |

8-394.00 KY 92
Project Location
MP 9.6 to 11.7

Date: 7/30/2012



KYTC
Division of Planning
200 Mero St, Suite W-5
Frankfort, KY 40601
Phone: (502) 564-7183

